

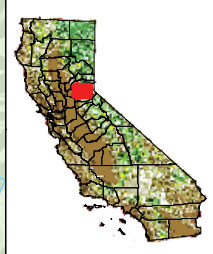
- Project Facilities**
- ▲ Powerhouse
  - Dam
  - Tunnel
  - Penstock
- Transportation**
- Major Road
  - Minor Road
- Hydrography**
- Watercourse
  - Water Body
- Designated Boundary**
- County Boundary
  - Wilderness Area
  - Middle Fork American River Watershed\*

\*Modified from Calwater Ver. 2.2 to represent drainage above high-water mark of Folsom Lake



Placer County Water Agency  
Middle Fork American River Project

**Map CUL 1-1**  
**Middle Fork American River Project and Vicinity**



0 1 2 3 4 5  
Miles

Projection: CA State Plane, Zone 2  
Datum: NAD 83

Date: 3/28/08

### PCWA Facilities and Features

- Dam
- Ancillary and Other Facilities
- Powerhouse
- Gage
- Penstock
- Tunnel
- Pipeline
- Gate
- Access Point
- Public Safety Fence
- FERC Boundary
- Water Supply Line (above ground)
- Water Supply Line (buried)
- Project Power and Communication Lines:**
- Communication
- Power
- Power (underground)
- Communication/Power
- Communication/Power (underground)

### Archaeological Survey Coverage

- Areas Surveyed 2006
- Areas Surveyed 2007
- Areas Surveyed 2008

### Transportation

- Non-Project General Access Road
- Project Road
- Project Trail
- Recreation Access Road
- Recreation Water Supply Facility Access Road or Trail
- Other Road

### Project Recreation Facilities

- Picnic Area
- Boat Ramp
- Scenic Viewpoint
- Developed Campground
- Recreation Facility Footprints

### Other Facilities

PG & E Transmission Lines:

- 230 kV
- 60 kV

### Potential Betterments Features\*

- Construction Staging or Work Areas
- Temporary Road Associated with Potential Project Betterments
- Permanent Road Associated with Potential Project Betterments

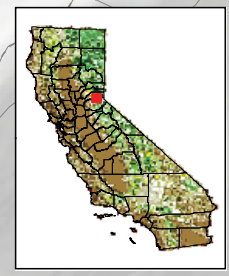
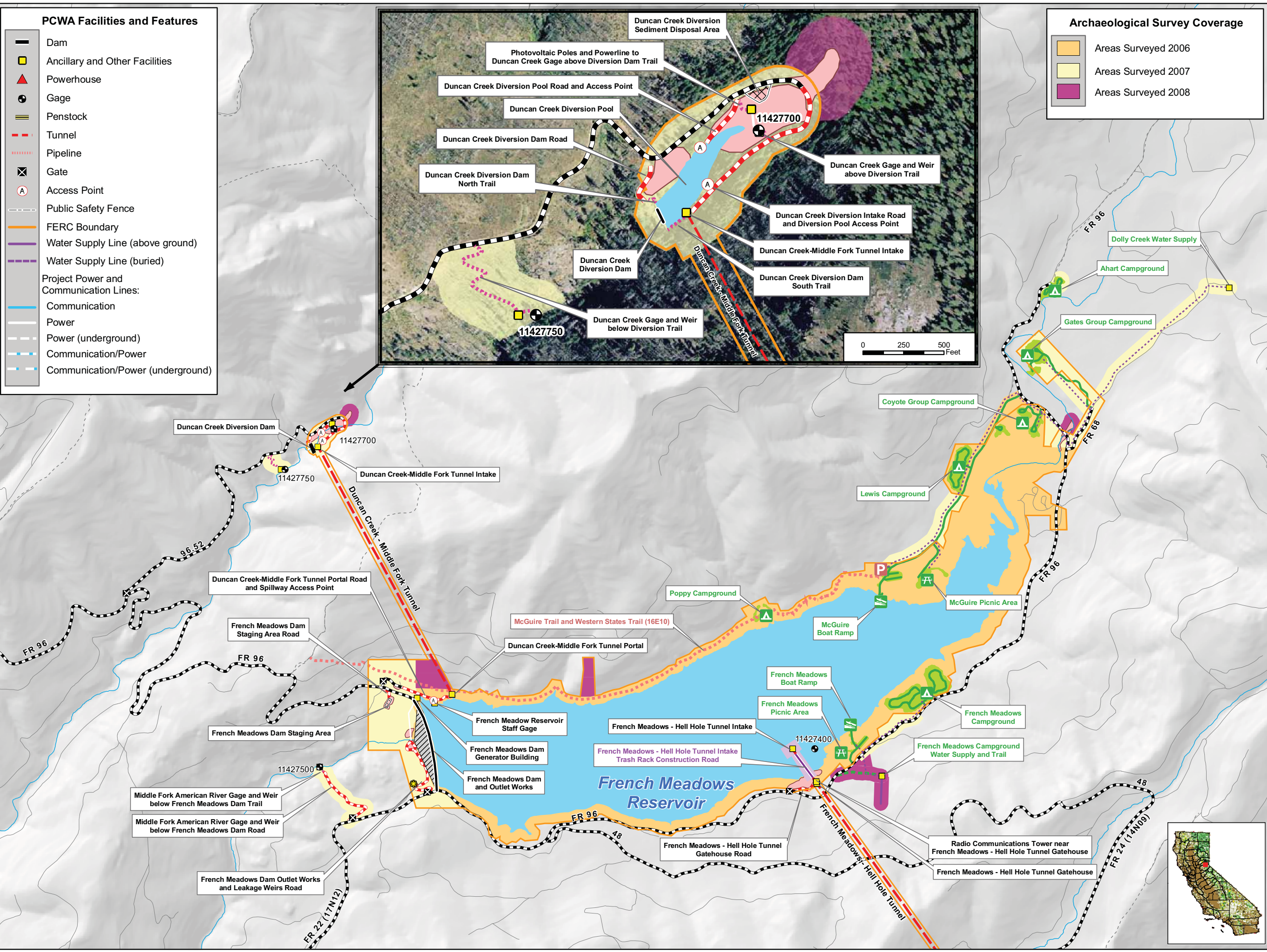
\* The proposed Project betterments are currently under review. The final configuration will be provided to the stakeholders and included in the Final Technical Study Plans

### Designated Boundary

- Special Area

### Facilities and Dispersed Recreation Areas Identified by Stakeholders

- Recreation Access OHV Road
- Recreation Access Trail
- Trailhead
- Dispersed Concentrated Use Area
- Parking Area



Placer County Water Agency  
Middle Fork American River Project  
Map CUL 1-2  
Areas Surveyed for Cultural Resources in 2006, 2007 and 2008  
Sheet 1 of 6  
Duncan Creek, French Meadows Area

0 0.25 0.5 Miles  
Projection: Ca. Stateplane, Zone 2  
Datum: NAD 83  
Date: 3/23/09

- ### PCWA Facilities and Features
- Dam
  - Ancillary and Other Facilities
  - Powerhouse
  - Gage
  - Penstock
  - Tunnel
  - Pipeline
  - Gate
  - Access Point
  - Public Safety Fence
  - FERC Boundary
  - Water Supply Line (above ground)
  - Water Supply Line (buried)
  - Project Power and Communication Lines:**
  - Communication
  - Power
  - Power (underground)
  - Communication/Power
  - Communication/Power (underground)

- ### Archaeological Survey Coverage
- Areas Surveyed 2006
  - Areas Surveyed 2007
  - Areas Surveyed 2008

- ### Transportation
- Non-Project General Access Road
  - Project Road
  - Project Trail
  - Recreation Access Road
  - Recreation Water Supply Facility Access Road or Trail
  - Other Road

- ### Project Recreation Facilities
- Picnic Area
  - Boat Ramp
  - Scenic Viewpoint
  - Developed Campground
  - Recreation Facility Footprints

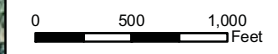
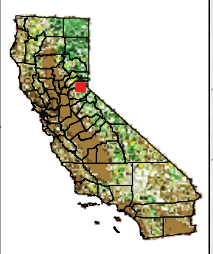
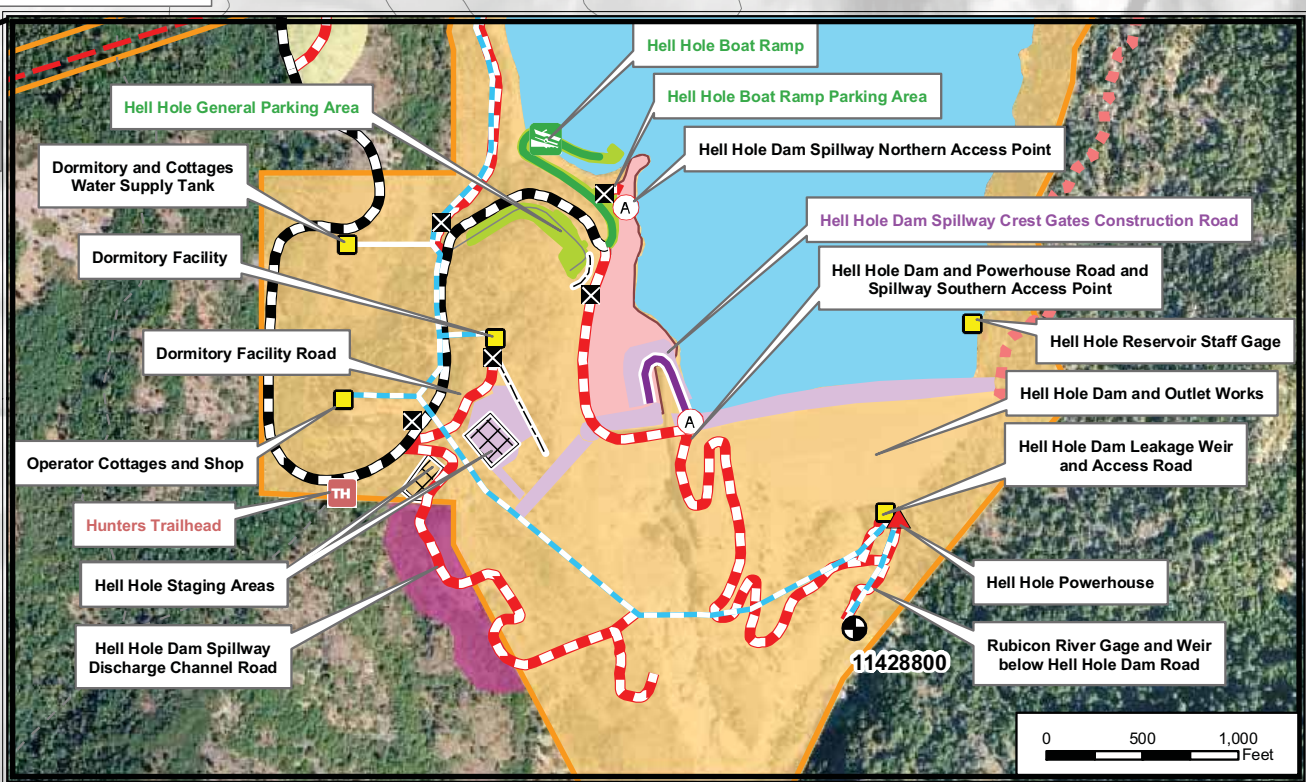
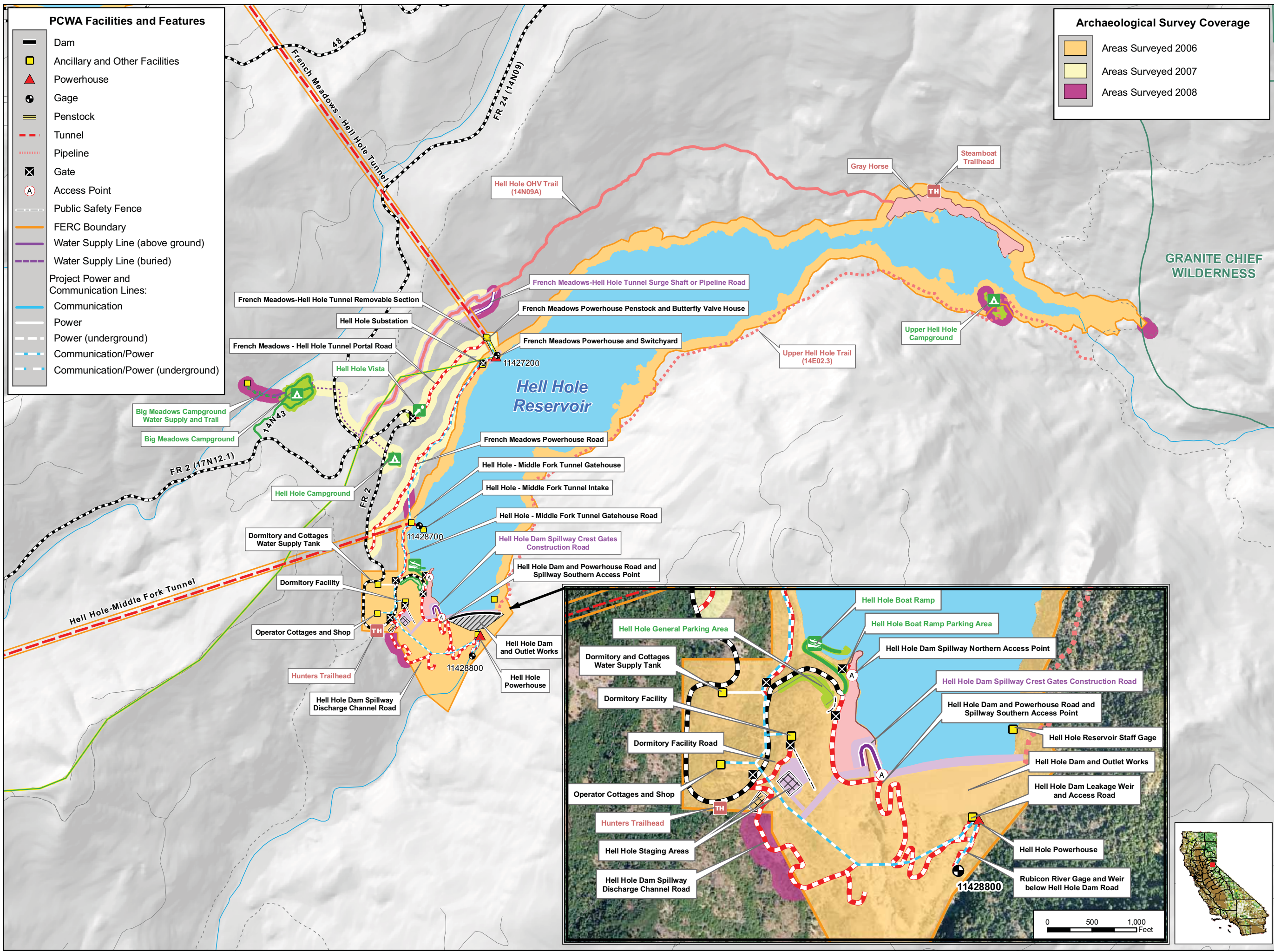
- ### Other Facilities
- PG & E Transmission Lines:
- 230 kV
  - 60 kV


- ### Potential Betterments Features\*
- Construction Staging or Work Areas
  - Temporary Road Associated with Potential Project Betterments
  - Permanent Road Associated with Potential Project Betterments

\* The proposed Project betterments are currently under review. The final configuration will be provided to the stakeholders and included in the Final Technical Study Plans

- ### Designated Boundary
- Special Area

- ### Facilities and Dispersed Recreation Areas Identified by Stakeholders
- Recreation Access OHV Road
  - Recreation Access Trail
  - Trailhead
  - Dispersed Concentrated Use Area
  - Parking Area






Placer County Water Agency  
Middle Fork American River Project

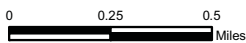
**Map CUL 1-2**

**Areas Surveyed for Cultural Resources in 2006, 2007, and 2008**

Sheet 2 of 6  
Hell Hole Area



Date: 3/23/09



0 0.25 0.5 Miles

Projection: Ca. Stateplane, Zone 2  
Datum: NAD 83

- ### PCWA Facilities and Features
- Dam
  - Ancillary and Other Facilities
  - Powerhouse
  - Gage
  - Penstock
  - Tunnel
  - Pipeline
  - Gate
  - Access Point
  - Public Safety Fence
  - FERC Boundary
  - Water Supply Line (above ground)
  - Water Supply Line (buried)
  - Project Power and Communication Lines:
    - Communication
    - Power
    - Power (underground)
    - Communication/Power
    - Communication/Power (underground)

- ### Archaeological Survey Coverage
- Areas Surveyed 2006
  - Areas Surveyed 2007
  - Areas Surveyed 2008

- ### Transportation
- Non-Project General Access Road
  - Project Road
  - Project Trail
  - Recreation Access Road
  - Recreation Water Supply Facility Access Road or Trail
  - Other Road

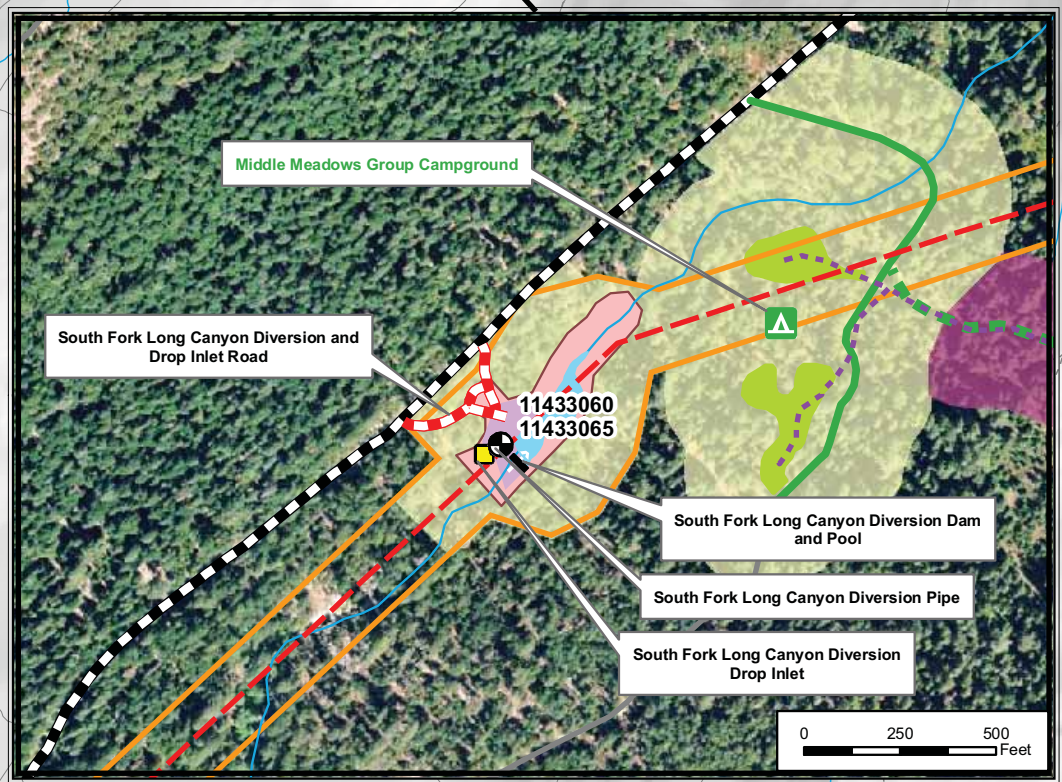
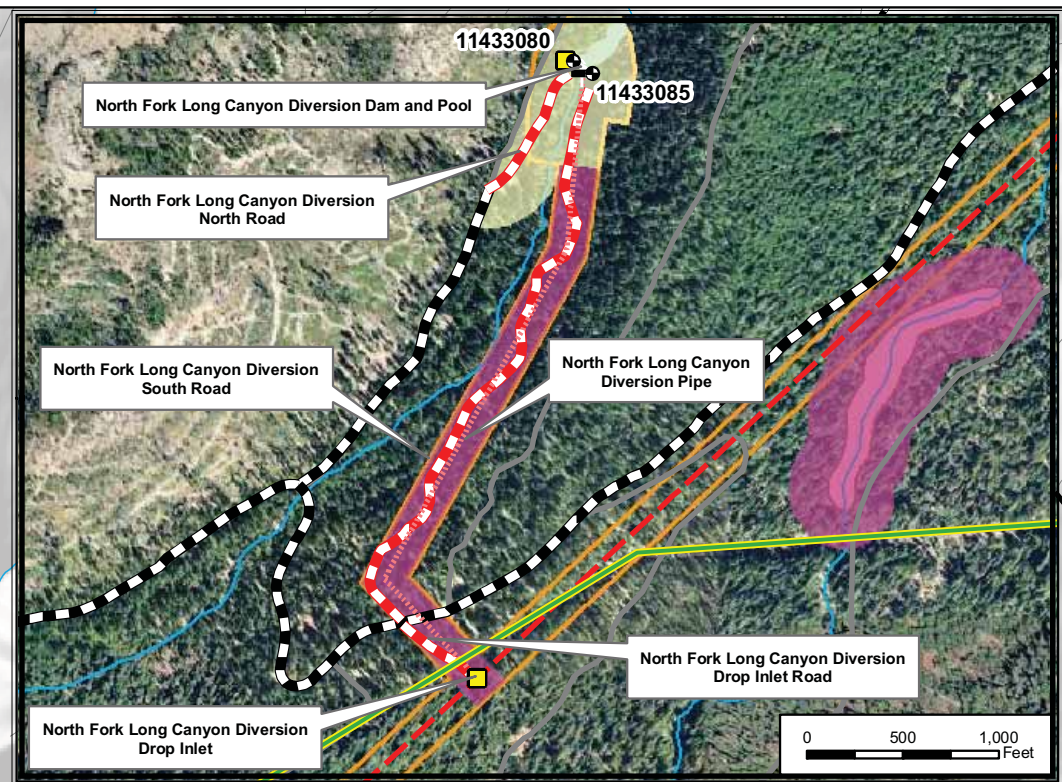
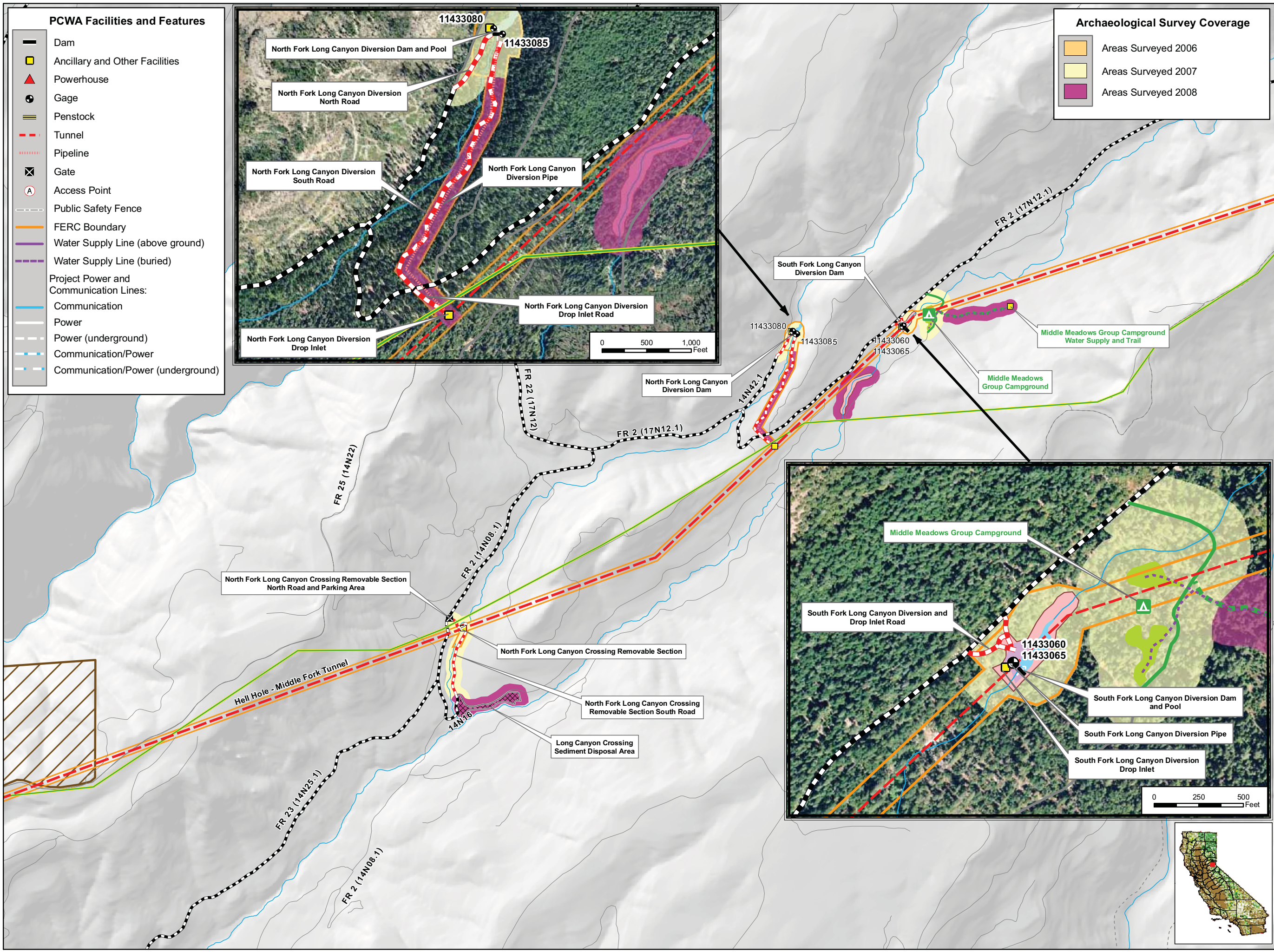
- ### Project Recreation Facilities
- Picnic Area
  - Boat Ramp
  - Scenic Viewpoint
  - Developed Campground
  - Recreation Facility Footprints

- ### Other Facilities
- PG & E Transmission Lines:
- 230 kV
  - 60 kV

- ### Potential Betterments Features\*
- Construction Staging or Work Areas
  - Temporary Road Associated with Potential Project Betterments
  - Permanent Road Associated with Potential Project Betterments
- \* The proposed Project betterments are currently under review. The final configuration will be provided to the stakeholders and included in the Final Technical Study Plans

- ### Designated Boundary
- Special Area

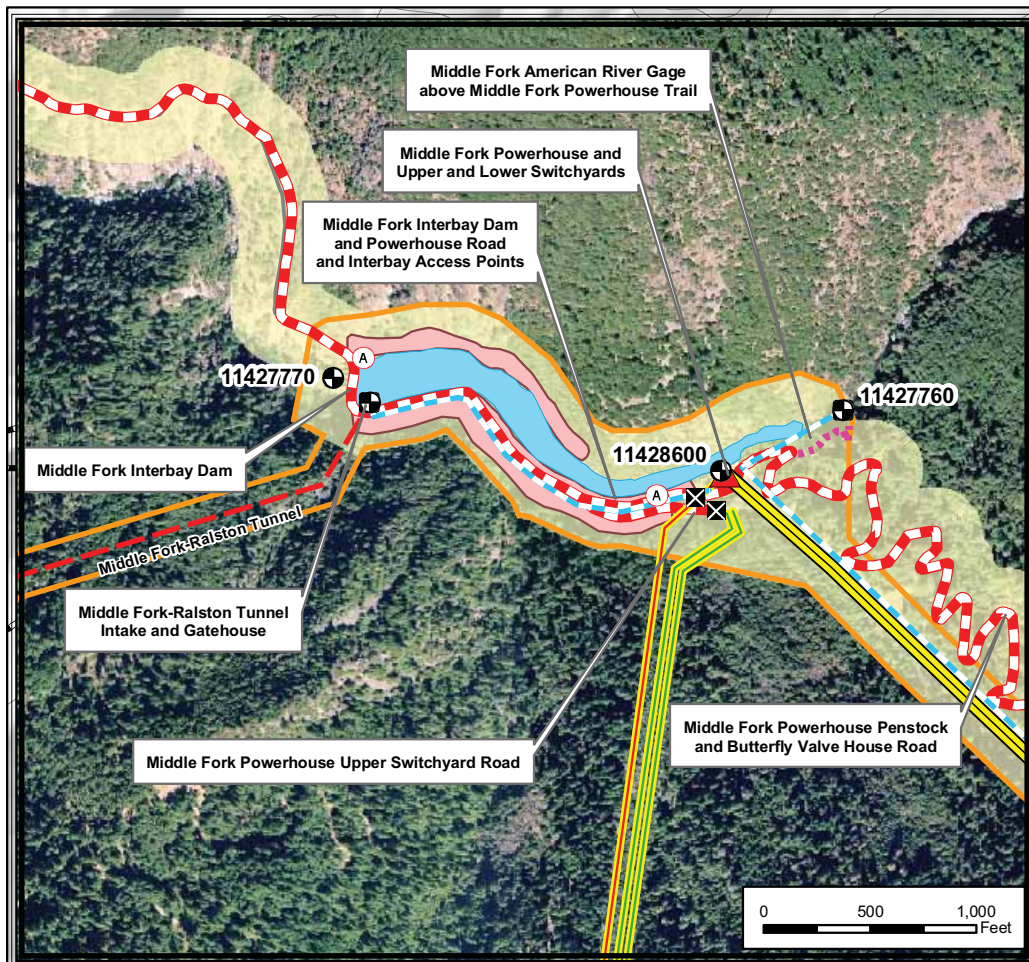
- ### Facilities and Dispersed Recreation Areas Identified by Stakeholders
- Recreation Access OHV Road
  - Recreation Access Trail
  - Trailhead
  - Dispersed Concentrated Use Area
  - Parking Area



Placer County Water Agency  
Middle Fork American River Project  
**Map CUL 1-2**  
Areas Surveyed for Cultural Resources in 2006, 2007 and 2008  
Sheet 3 of 6  
Long Canyon Area

Projection: Ca. Stateplane, Zone 2  
Datum: NAD 83

Date: 3/23/09



### PCWA Facilities and Features

- Dam
- Ancillary and Other Facilities
- Powerhouse
- Gage
- Penstock
- Tunnel
- Pipeline
- Gate
- Access Point
- Public Safety Fence
- FERC Boundary
- Water Supply Line (above ground)
- Water Supply Line (buried)
- Project Power and Communication Lines:**
  - Communication
  - Power
  - Power (underground)
  - Communication/Power
  - Communication/Power (underground)

### Transportation

- Non-Project General Access Road
- Project Road
- Project Trail
- Recreation Access Road
- Recreation Water Supply Facility Access Road or Trail
- Other Road

### Project Recreation Facilities

- Picnic Area
- Boat Ramp
- Scenic Viewpoint
- Developed Campground
- Recreation Facility Footprints

### Other Facilities

PG & E Transmission Lines:

- 230 kV
- 60 kV

### Potential Betterments Features\*

- Construction Staging or Work Areas
- Temporary Road Associated with Potential Project Betterments
- Permanent Road Associated with Potential Project Betterments

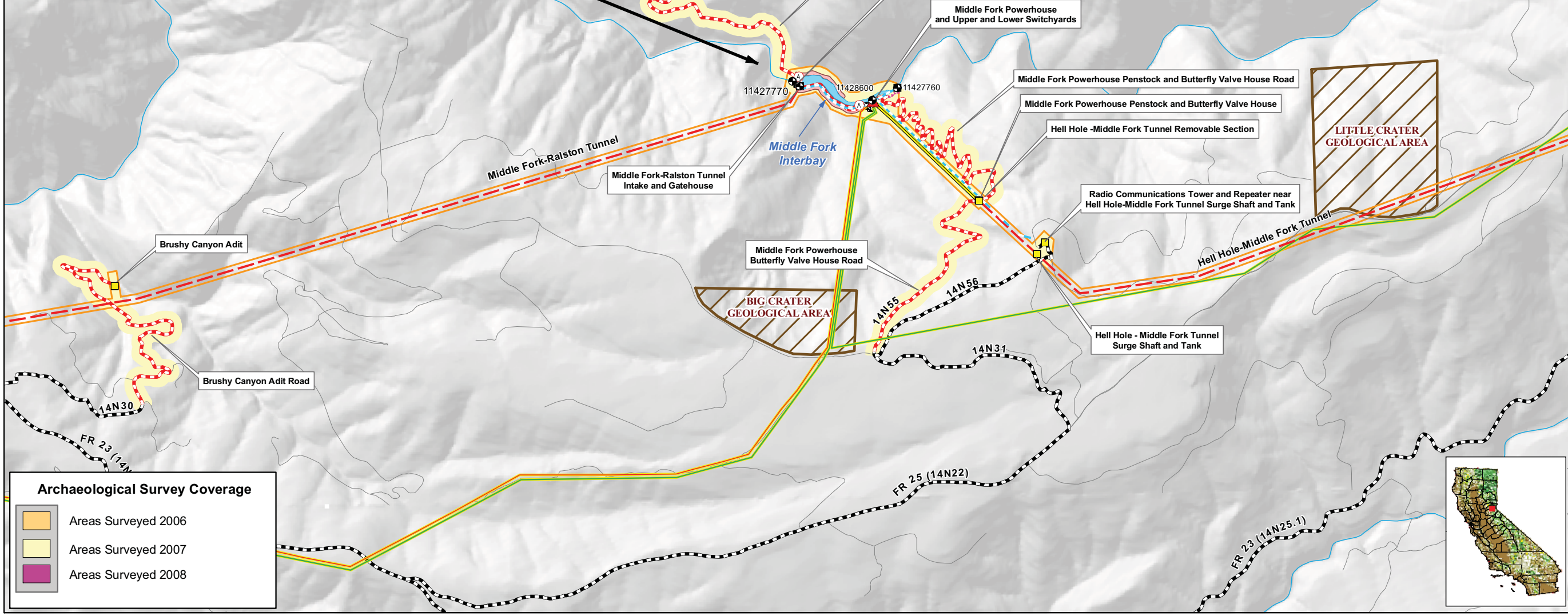
\* The proposed Project betterments are currently under review. The final configuration will be provided to the stakeholders and included in the Final Technical Study Plans

### Designated Boundary

- Special Area

### Facilities and Dispersed Recreation Areas Identified by Stakeholders

- Recreation Access OHV Road
- Recreation Access Trail
- Trailhead
- Dispersed Concentrated Use Area
- Parking Area

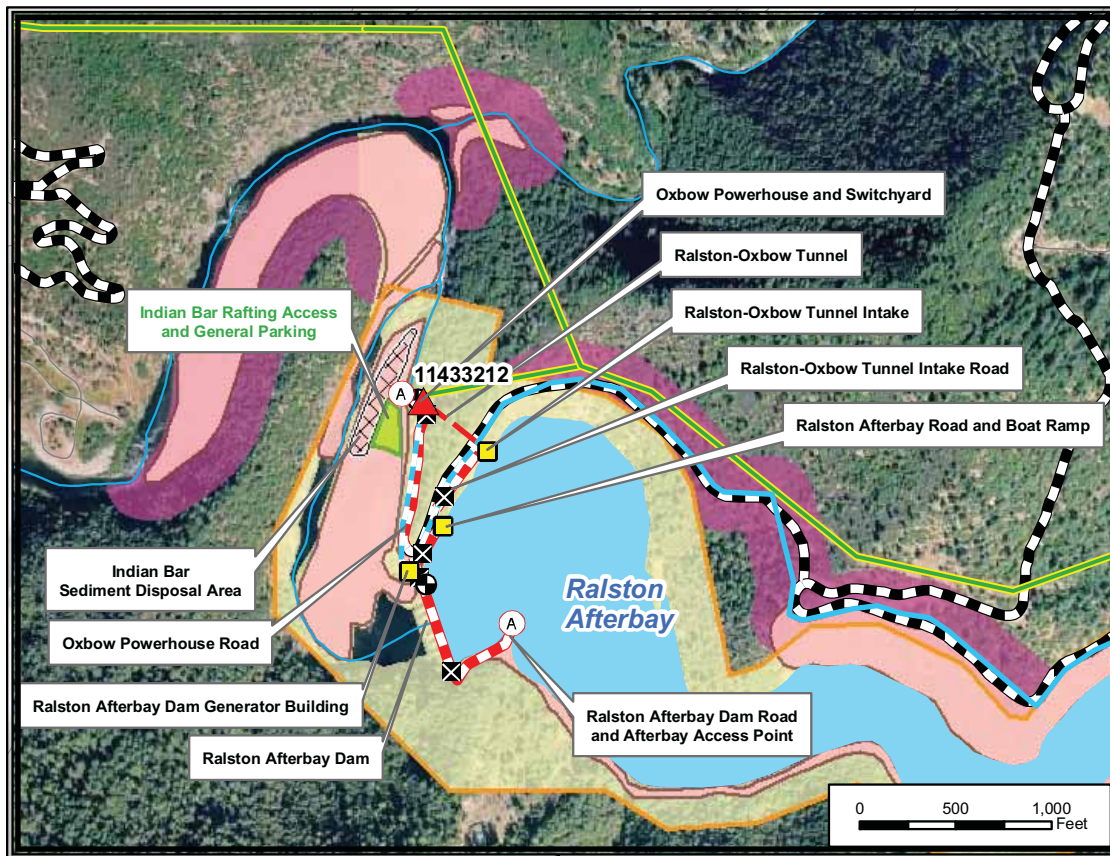


### Archaeological Survey Coverage

- Areas Surveyed 2006
- Areas Surveyed 2007
- Areas Surveyed 2008

Placer County Water Agency  
Middle Fork American River Project  
**Map CUL 1-2**  
Areas Surveyed for Cultural Resources in 2006, 2007 and 2008  
Sheet 4 of 6  
Interbay Area

0 0.25 0.5 Miles  
Projection: Ca. Stateplane, Zone 2  
Datum: NAD 83  
Date: 3/23/09



### PCWA Facilities and Features

- Dam
- Ancillary and Other Facilities
- Powerhouse
- Gage
- Penstock
- Tunnel
- Pipeline
- Gate
- Access Point
- Public Safety Fence
- FERC Boundary
- Water Supply Line (above ground)
- Water Supply Line (buried)
- Project Power and Communication Lines:
  - Communication
  - Power
  - Power (underground)
  - Communication/Power
  - Communication/Power (underground)

### Transportation

- Non-Project General Access Road
- Project Road
- Project Trail
- Recreation Access Road
- Recreation Water Supply Facility Access Road or Trail
- Other Road

### Project Recreation Facilities

- Picnic Area
- Boat Ramp
- Scenic Viewpoint
- Developed Campground
- Recreation Facility Footprints

### Other Facilities

PG & E Transmission Lines:

- 230 kV
- 60 kV

### Potential Betterments Features\*

- Construction Staging or Work Areas
- Temporary Road Associated with Potential Project Betterments
- Permanent Road Associated with Potential Project Betterments

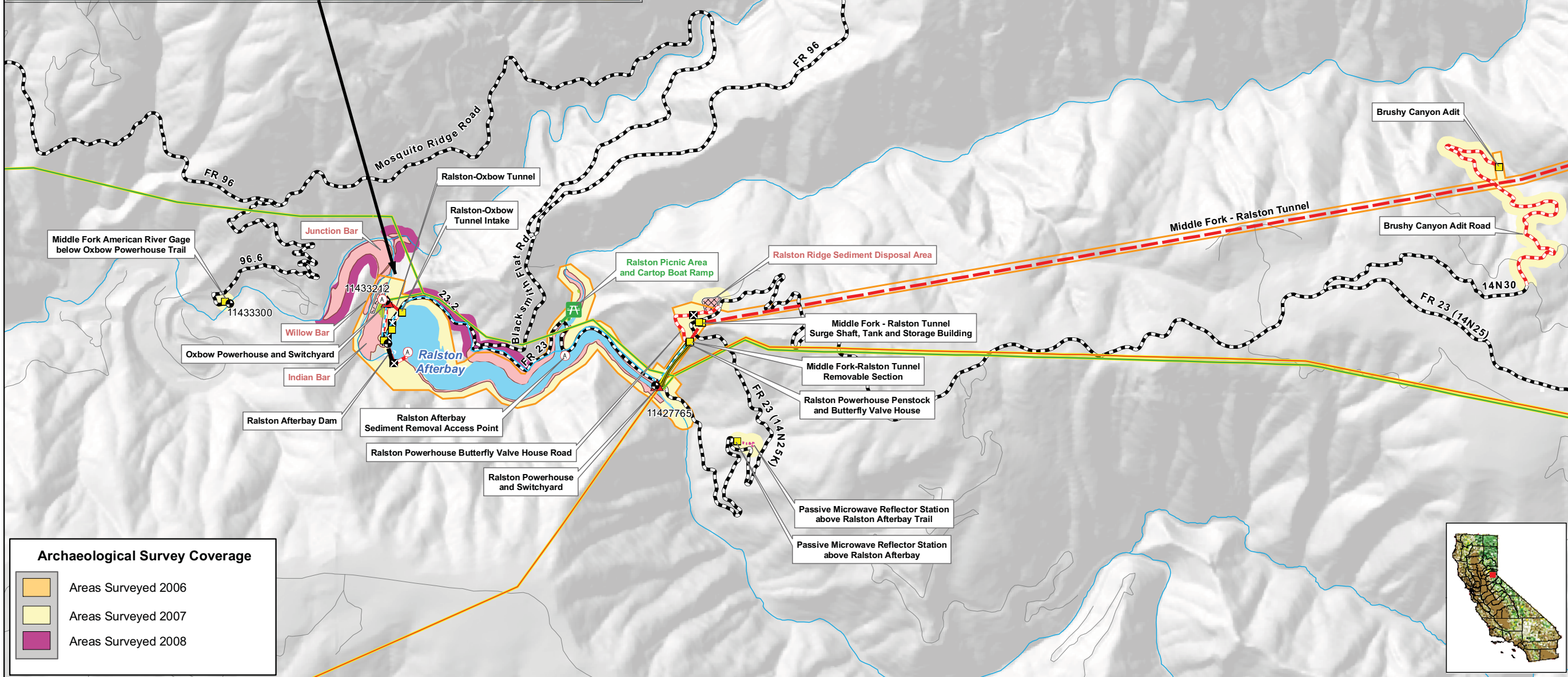
\* The proposed Project betterments are currently under review. The final configuration will be provided to the stakeholders and included in the Final Technical Study Plans

### Designated Boundary

- Special Area

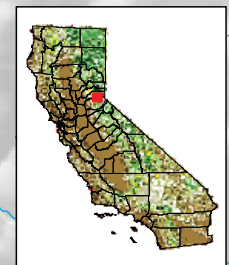
### Facilities and Dispersed Recreation Areas Identified by Stakeholders

- Recreation Access OHV Road
- Recreation Access Trail
- Trailhead
- Dispersed Concentrated Use Area
- Parking Area



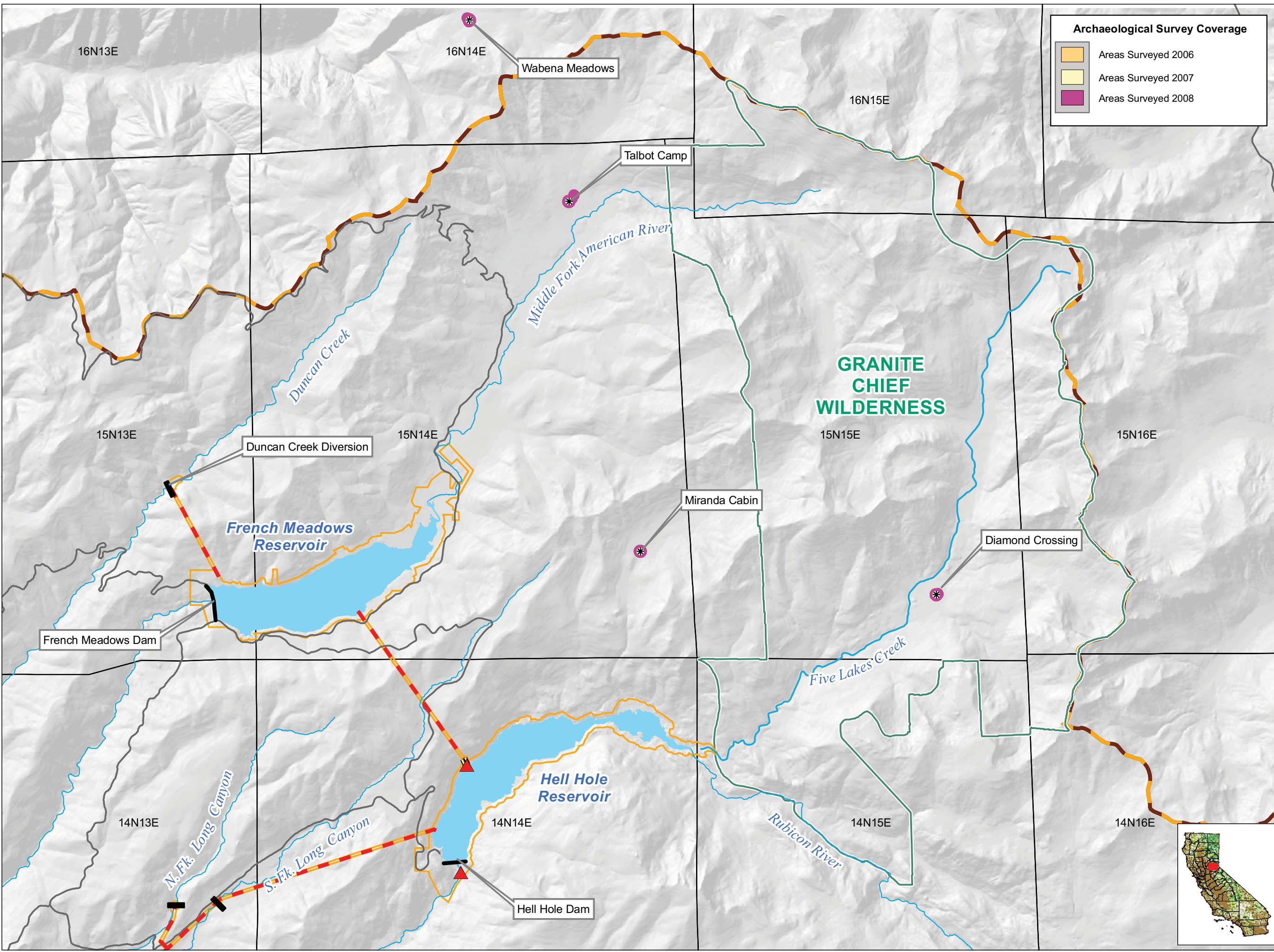
### Archaeological Survey Coverage

- Areas Surveyed 2006
- Areas Surveyed 2007
- Areas Surveyed 2008



Placer County Water Agency  
Middle Fork American River Project  
**Map CUL 1-2**  
Areas Surveyed for Cultural Resources in 2006, 2007 and 2008  
Sheet 5 of 6  
Ralston, Oxbow Area

Scale: 0, 0.25, 0.5 Miles  
Projection: Ca. Stateplane, Zone 2  
Datum: NAD 83  
Date: 3/23/09



**Archaeological Survey Coverage**

- Areas Surveyed 2006
- Areas Surveyed 2007
- Areas Surveyed 2008

**Project Facilities**

- Powerhouse
- Dam
- Snow Course Location
- Tunnel
- Penstock
- FERC Boundary

**Transportation**

- Roads

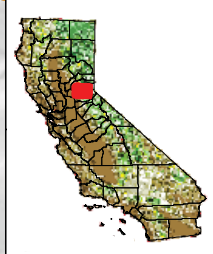
**Hydrography**

- Watercourse
- Water Body
- Middle Fork American River Watershed\*

\*Modified from Calwater Ver. 2.2 to represent drainage above high-water mark of Folsom Lake

**Designated Boundary**

- Wilderness Area



**PCWA**

Placer County Water Agency  
Middle Fork American River Project  
Map CUL 1-2  
**Areas Surveyed for Cultural Resources in 2006, 2007 and 2008**  
Sheet 6 of 6  
Project Snow Courses

Date: 3/23/09

Projection: CA State Plane, Zone 2  
Datum: NAD 83

### PCWA Facilities and Features

- Dam
- Ancillary and Other Facilities
- Powerhouse
- Gage
- Penstock
- Tunnel
- Pipeline
- Gate
- Access Point
- Public Safety Fence
- FERC Boundary
- Water Supply Line (above ground)
- Water Supply Line (buried)
- Project Power and Communication Lines:
  - Communication
  - Power
  - Power (underground)
  - Communication/Power
  - Communication/Power (underground)

### Land Jurisdictions / Ownership\*

- Eldorado National Forest
- Tahoe National Forest
- PCWA
- Lone Star Timber
- Sierra Pacific Industries\*\*
- Other Private (Blank)

\*\* Includes former properties of R.H. Emmerson & Son, LLC

\* PARCEL DATA SOURCES:  
 Placer County, July 2006, El Dorado County, February 2007, USFS Region 5, February 2009.  
 Some data has been modified to account for known errors and is to be used for general planning purposes only.

### Transportation

- Non-Project General Access Road
- Project Road
- Project Trail
- Recreation Access Road
- Recreation Water Supply Facility Access Road or Trail
- Other Road

### Project Recreation Facilities

- Picnic Area
- Boat Ramp
- Scenic Viewpoint
- Developed Campground
- Recreation Facility Footprints

### Other Facilities

PG & E Transmission Lines:

- 230 kV
- 60 kV

### Potential Betterments Features\*

- Construction Staging or Work Areas
- Temporary Road Associated with Potential Project Betterments
- Permanent Road Associated with Potential Project Betterments

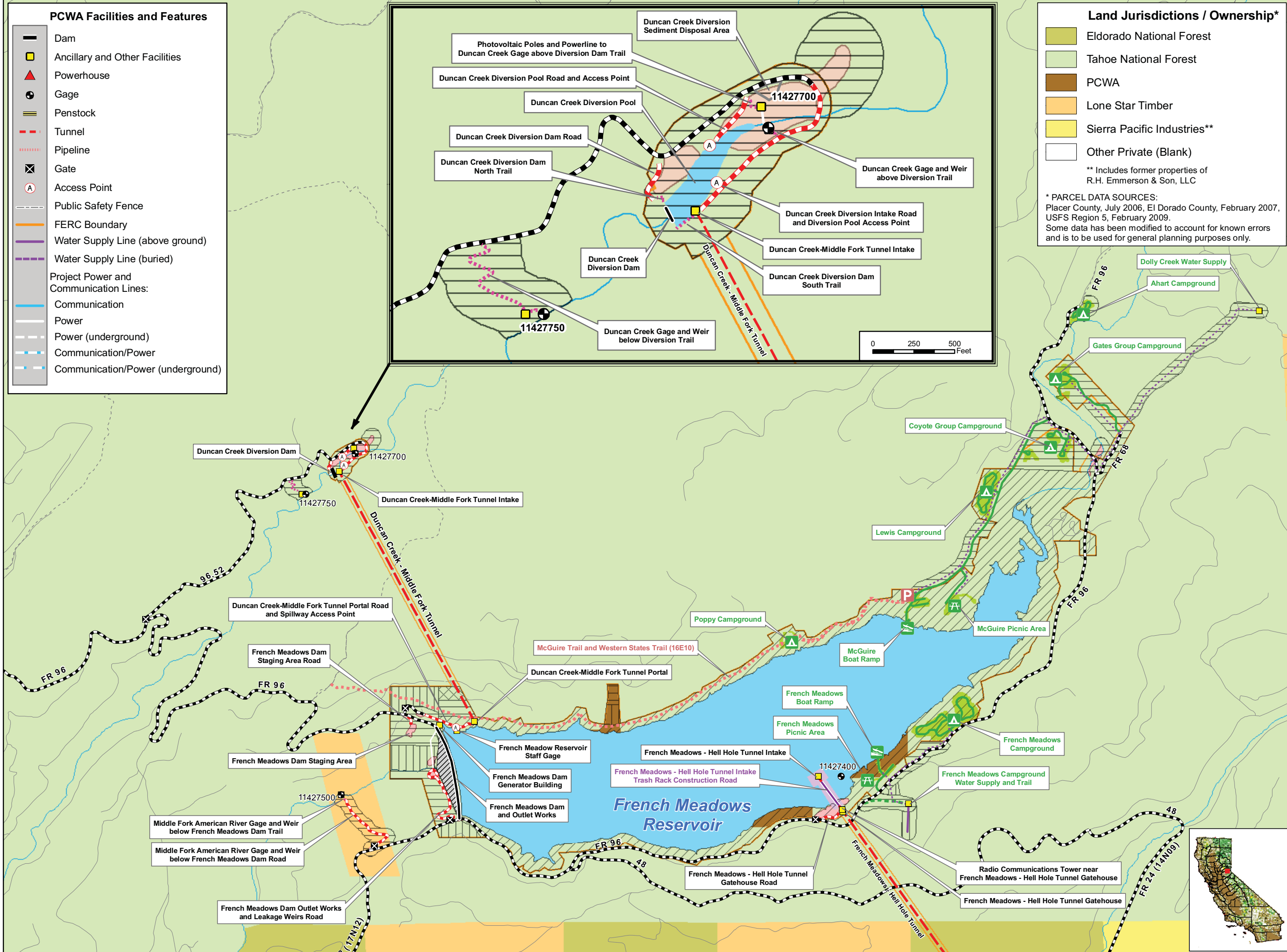
\* The proposed Project betterments are currently under review. The final configuration will be provided to the stakeholders and included in the Final Technical Study Plans

### Facilities and Dispersed Recreation Areas Identified by Stakeholders

- Recreation Access OHV Road
- Recreation Access Trail
- Trailhead
- Dispersed Concentrated Use Area
- Parking Area

### Archaeological Survey Methods

- Visual Reconnaissance
- Pedestrian Survey - Complete
- Pedestrian Survey - General
- Inaccessible Area



Placer County Water Agency  
 Middle Fork American River Project

**Map CUL 1-3**  
**Cultural Resources Survey Area**  
 Showing Survey Methods and Jurisdictions  
 Sheet 1 of 6  
 Duncan Creek, French Meadows Area

0 0.25 0.5 Miles  
 Projection: Ca. Stateplane, Zone 2  
 Datum: NAD 83  
 Date: 3/23/09



### PCWA Facilities and Features

- Dam
- Ancillary and Other Facilities
- Powerhouse
- Gage
- Penstock
- Tunnel
- Pipeline
- Gate
- Access Point
- Public Safety Fence
- FERC Boundary
- Water Supply Line (above ground)
- Water Supply Line (buried)
- Project Power and Communication Lines:
  - Communication
  - Power
  - Power (underground)
  - Communication/Power
  - Communication/Power (underground)

### Land Jurisdictions / Ownership\*

- Eldorado National Forest
- Tahoe National Forest
- PCWA
- Lone Star Timber
- Sierra Pacific Industries\*\*
- Other Private (Blank)

\*\* Includes former properties of R.H. Emmerson & Son, LLC

\* PARCEL DATA SOURCES: Placer County, July 2006, El Dorado County, February 2007, USFS Region 5, February 2009. Some data has been modified to account for known errors and is to be used for general planning purposes only.

### Transportation

- Non-Project General Access Road
- Project Road
- Project Trail
- Recreation Access Road
- Recreation Water Supply Facility Access Road or Trail
- Other Road

### Project Recreation Facilities

- Picnic Area
- Boat Ramp
- Scenic Viewpoint
- Developed Campground
- Recreation Facility Footprints

### Other Facilities

PG & E Transmission Lines:

- 230 kV
- 60 kV

### Potential Betterments Features\*

- Construction Staging or Work Areas
- Temporary Road Associated with Potential Project Betterments
- Permanent Road Associated with Potential Project Betterments

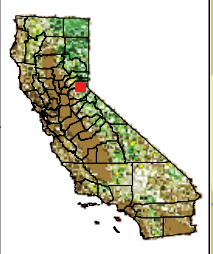
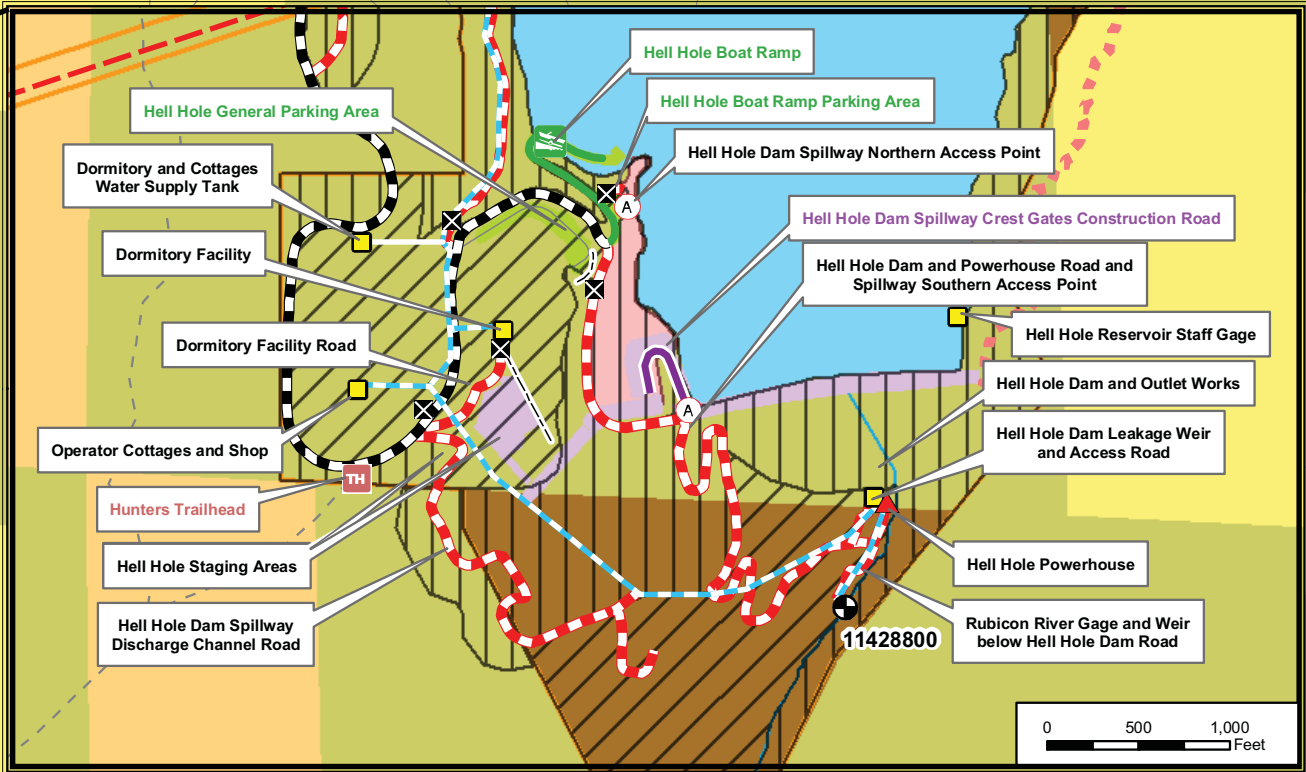
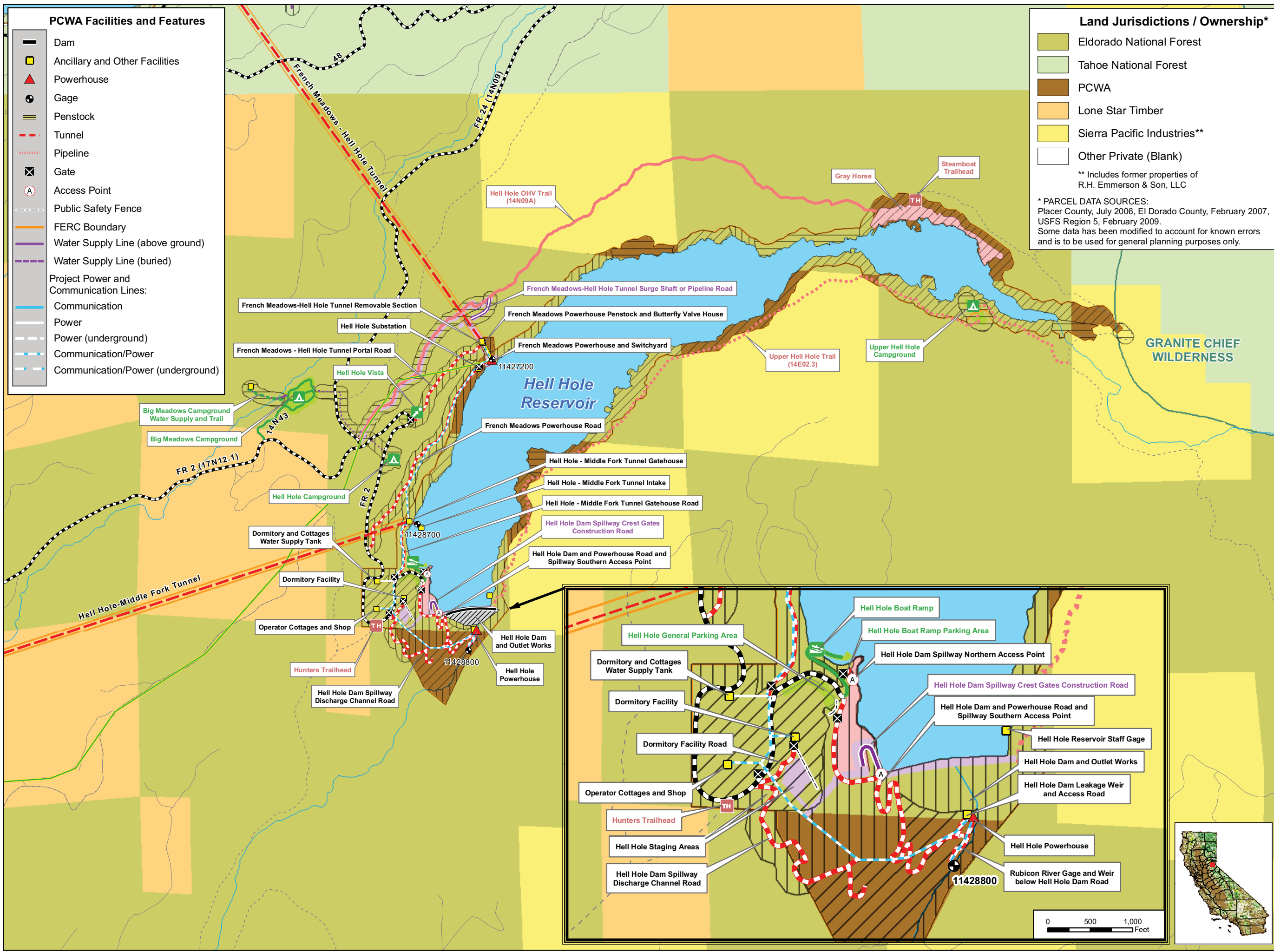
\* The proposed Project betterments are currently under review. The final configuration will be provided to the stakeholders and included in the Final Technical Study Plans

### Facilities and Dispersed Recreation Areas Identified by Stakeholders

- Recreation Access OHV Road
- Recreation Access Trail
- Trailhead
- Dispersed Concentrated Use Area
- Parking Area

### Archaeological Survey Methods

- Visual Reconnaissance
- Pedestrian Survey - Complete
- Pedestrian Survey - General
- Inaccessible Area



Placer County Water Agency  
Middle Fork American River Project  
**Map CUL 1-3**  
Cultural Resources Survey Area  
Showing Survey Methods and Jurisdictions  
Sheet 2 of 6  
Hell Hole Area

Date: 3/23/09

Projection: Ca. Stateplane, Zone 2  
Datum: NAD 83

- ### PCWA Facilities and Features
- Dam
  - Ancillary and Other Facilities
  - Powerhouse
  - Gage
  - Penstock
  - Tunnel
  - Pipeline
  - Gate
  - Access Point
  - Public Safety Fence
  - FERC Boundary
  - Water Supply Line (above ground)
  - Water Supply Line (buried)
  - Project Power and Communication Lines:**
  - Communication
  - Power
  - Power (underground)
  - Communication/Power
  - Communication/Power (underground)

- ### Land Jurisdictions / Ownership\*
- Eldorado National Forest
  - Tahoe National Forest
  - PCWA
  - Lone Star Timber
  - Sierra Pacific Industries\*\*
  - Other Private (Blank)
- \*\* Includes former properties of R.H. Emmerson & Son, LLC
- \* PARCEL DATA SOURCES:  
Placer County, July 2006, El Dorado County, February 2007, USFS Region 5, February 2009.  
Some data has been modified to account for known errors and is to be used for general planning purposes only.

- ### Transportation
- Non-Project General Access Road
  - Project Road
  - Project Trail
  - Recreation Access Road
  - Recreation Water Supply Facility Access Road or Trail
  - Other Road

- ### Project Recreation Facilities
- Picnic Area
  - Boat Ramp
  - Scenic Viewpoint
  - Developed Campground
  - Recreation Facility Footprints

- ### Other Facilities
- PG & E Transmission Lines:
- 230 kV
  - 60 kV

- ### Potential Betterments Features\*
- Construction Staging or Work Areas
  - Temporary Road Associated with Potential Project Betterments
  - Permanent Road Associated with Potential Project Betterments

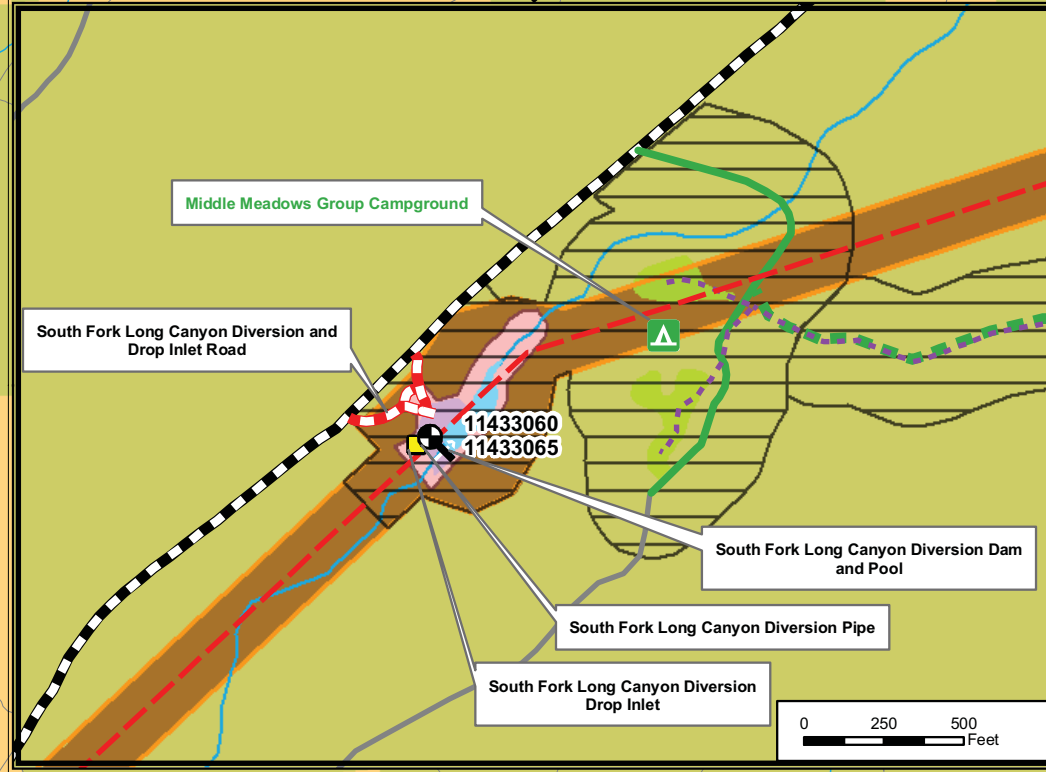
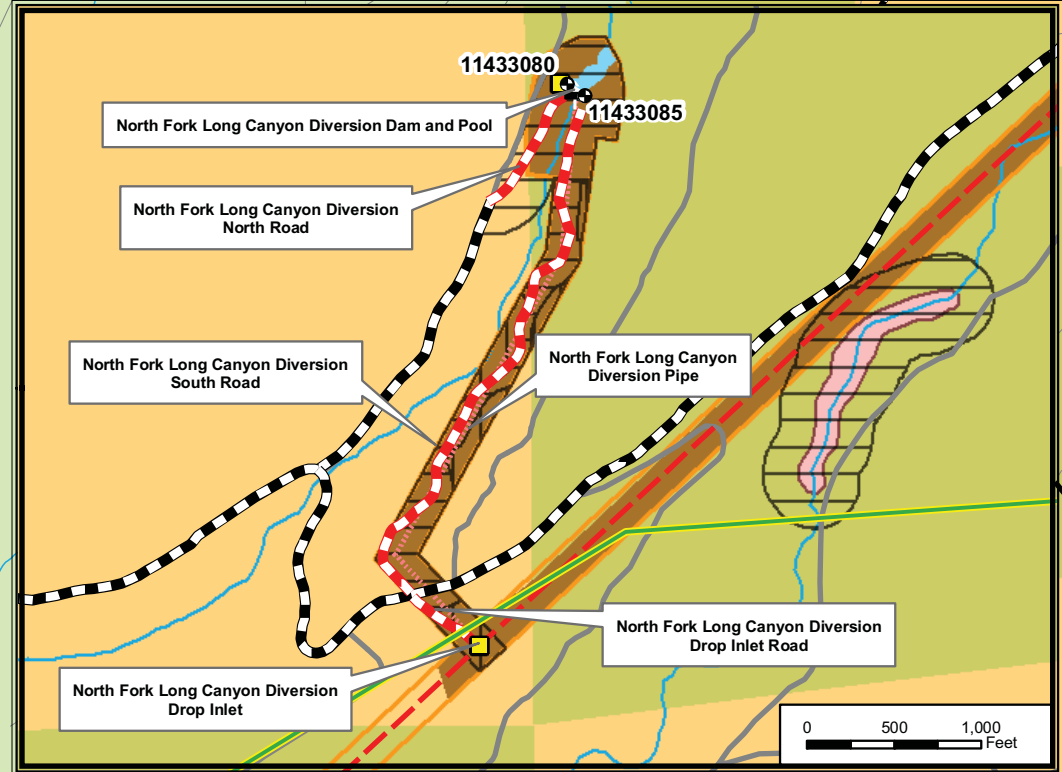
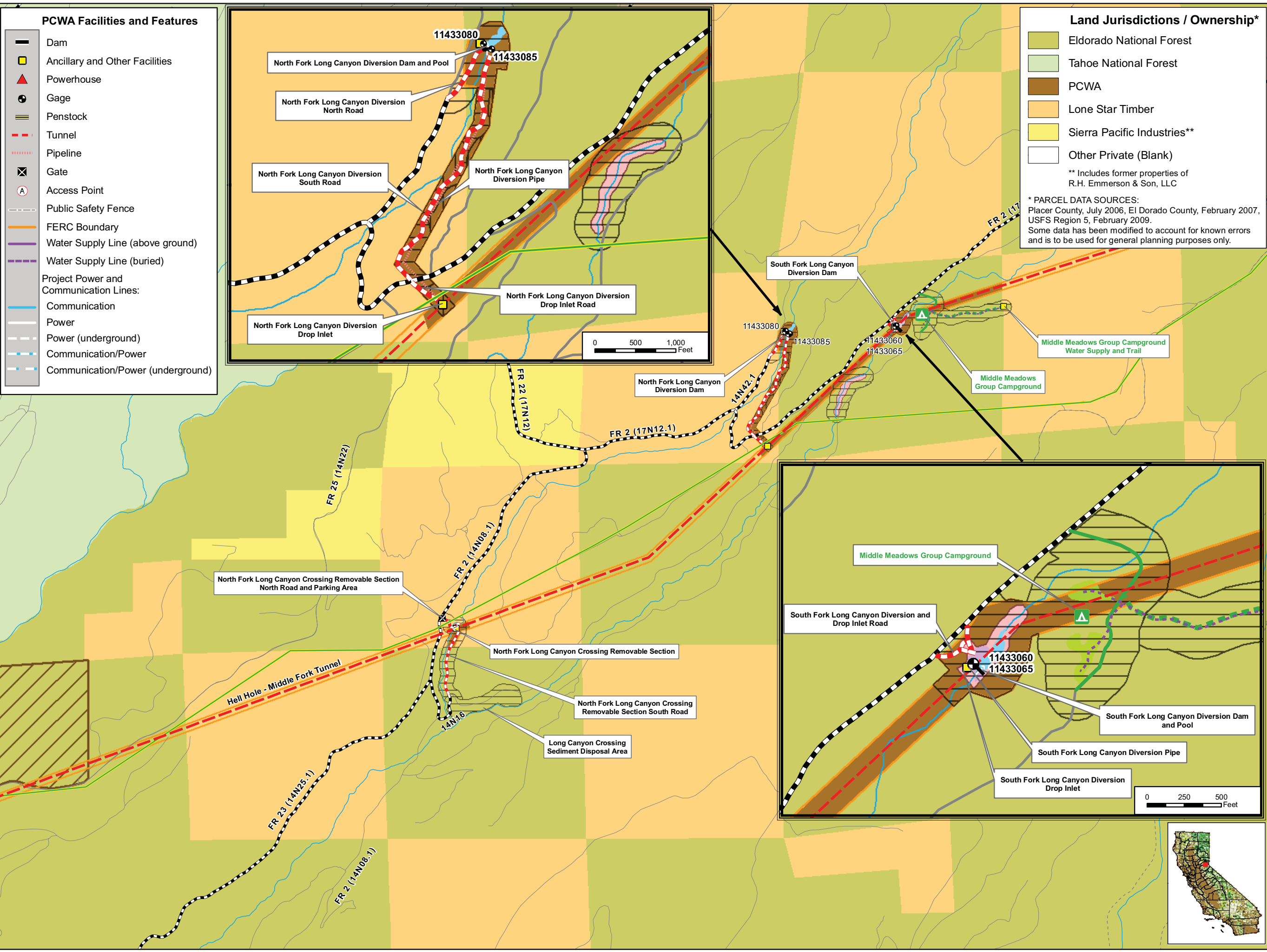

\* The proposed Project betterments are currently under review. The final configuration will be provided to the stakeholders and included in the Final Technical Study Plans

### Facilities and Dispersed Recreation Areas Identified by Stakeholders

- Recreation Access OHV Road
- Recreation Access Trail
- Trailhead
- Dispersed Concentrated Use Area
- Parking Area

### Archaeological Survey Methods

- Visual Reconnaissance
- Pedestrian Survey - Complete
- Pedestrian Survey - General
- Inaccessible Area

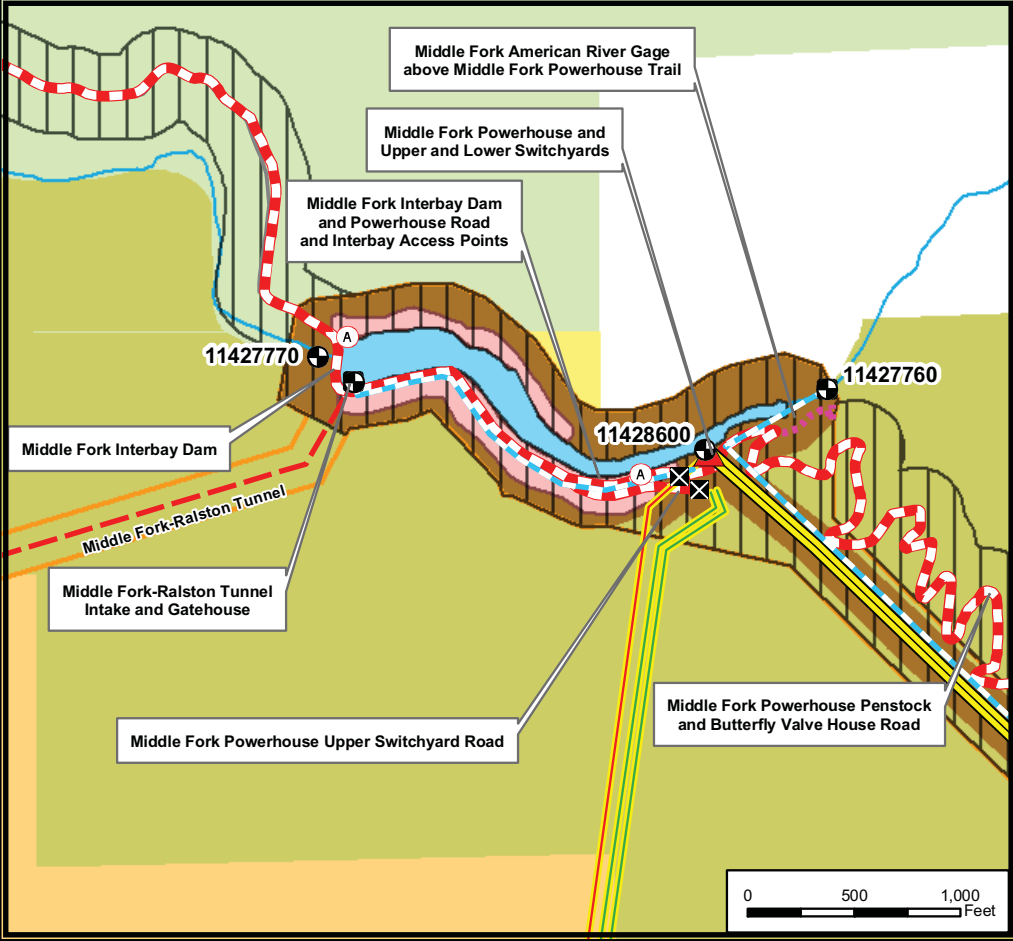
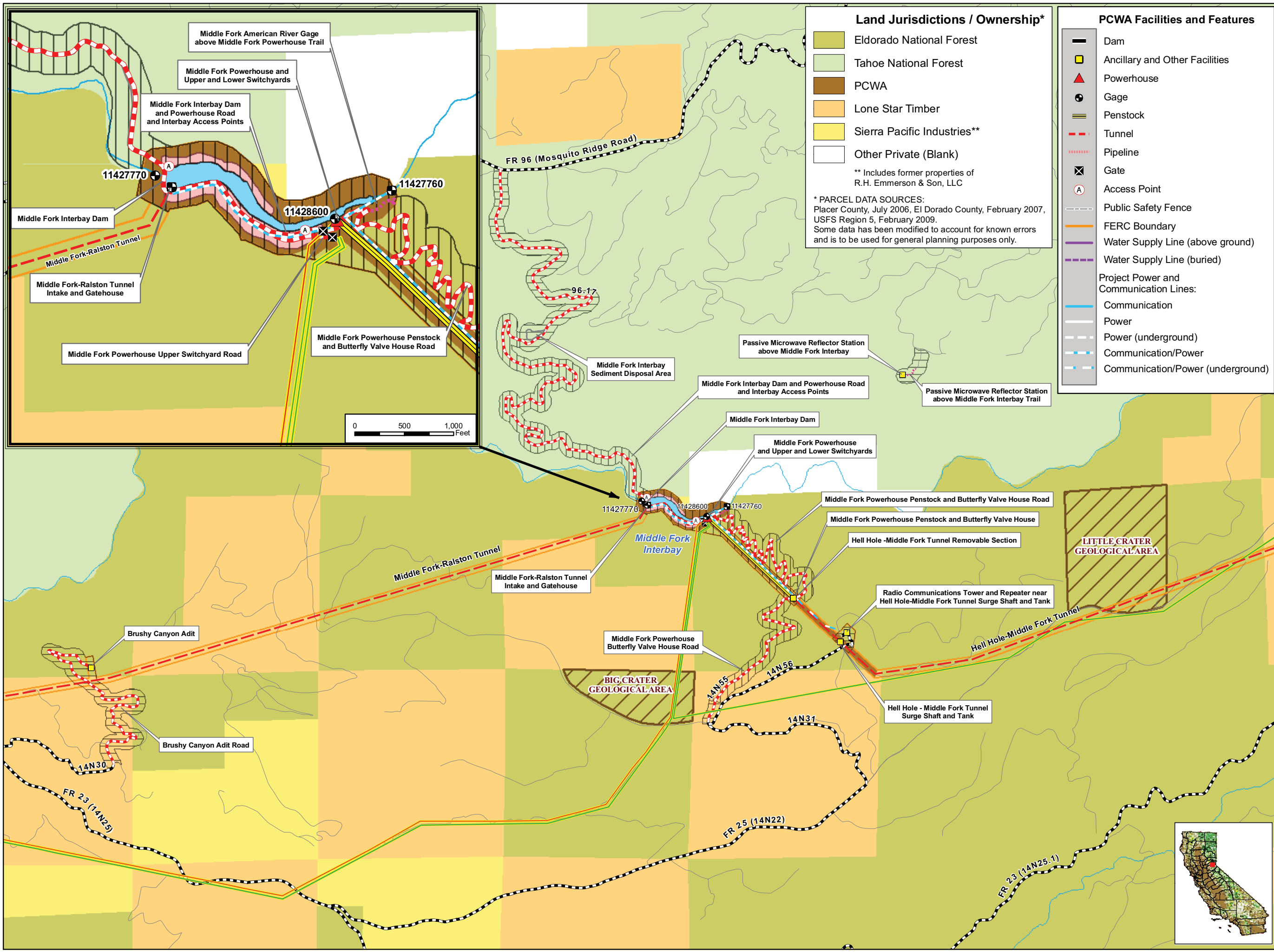



Placer County Water Agency  
Middle Fork American River Project  
**Map CUL 1-3**  
Cultural Resources Survey Area  
Showing Survey Methods and Jurisdictions  
Sheet 3 of 6  
Long Canyon Area

0 0.25 0.5 Miles

Projection: Ca. Stateplane, Zone 2  
Datum: NAD 83

Date: 3/23/09



### Land Jurisdictions / Ownership\*

- Eldorado National Forest
- Tahoe National Forest
- PCWA
- Lone Star Timber
- Sierra Pacific Industries\*\*
- Other Private (Blank)

\*\* Includes former properties of R.H. Emmerson & Son, LLC

\* PARCEL DATA SOURCES:  
Placer County, July 2006, El Dorado County, February 2007, USFS Region 5, February 2009.  
Some data has been modified to account for known errors and is to be used for general planning purposes only.

### PCWA Facilities and Features

- Dam
- Ancillary and Other Facilities
- Powerhouse
- Gage
- Penstock
- Tunnel
- Pipeline
- A Access Point
- Gate
- Public Safety Fence
- FERC Boundary
- Water Supply Line (above ground)
- Water Supply Line (buried)
- Project Power and Communication Lines:
- Communication
- Power
- Power (underground)
- Communication/Power
- Communication/Power (underground)

### Transportation

- Non-Project General Access Road
- Project Road
- Project Trail
- Recreation Access Road
- Recreation Water Supply Facility Access Road or Trail
- Other Road

### Project Recreation Facilities

- Picnic Area
- Boat Ramp
- Scenic Viewpoint
- Developed Campground
- Recreation Facility Footprints

### Other Facilities

PG & E Transmission Lines:

- 230 kV
- 60 kV

### Potential Betterments Features\*

- Construction Staging or Work Areas
- Temporary Road Associated with Potential Project Betterments
- Permanent Road Associated with Potential Project Betterments


\* The proposed Project betterments are currently under review. The final configuration will be provided to the stakeholders and included in the Final Technical Study Plans

### Facilities and Dispersed Recreation Areas Identified by Stakeholders

- Recreation Access OHV Road
- Recreation Access Trail
- TH Trailhead
- Dispersed Concentrated Use Area
- P Parking Area

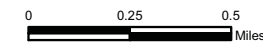
### Archaeological Survey Methods

- Visual Reconnaissance
- Pedestrian Survey - Complete
- Pedestrian Survey - General
- Inaccessible Area



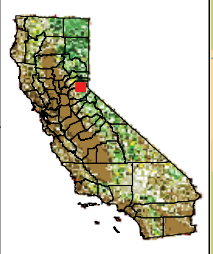
Placer County Water Agency  
Middle Fork American River Project

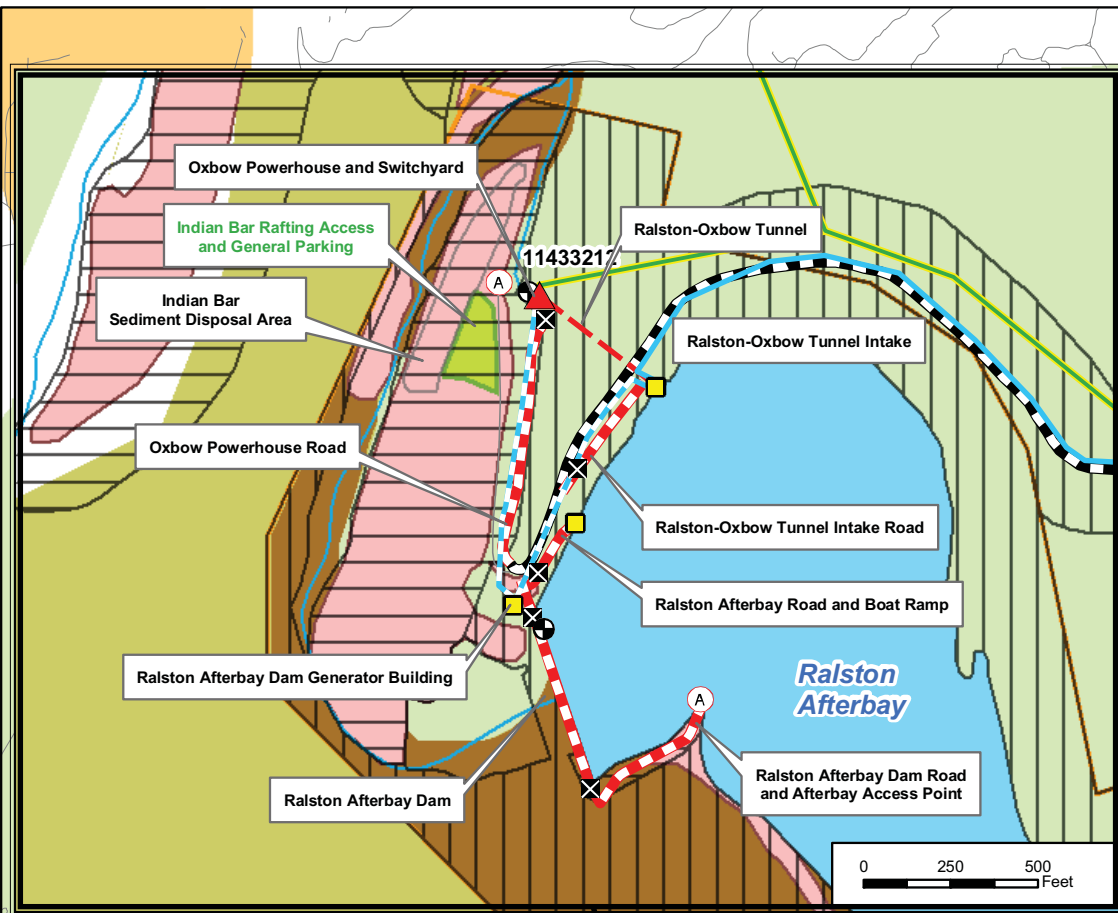
**Map CUL 1-3**  
**Cultural Resources Survey Area**  
**Showing Survey Methods and Jurisdictions**  
Sheet 4 of 6  
Interbay Area



Projection: Ca. Stateplane, Zone 2  
Datum: NAD 83

Date: 3/23/09





### Land Jurisdictions / Ownership\*

- Eldorado National Forest
- Tahoe National Forest
- PCWA
- Lone Star Timber
- Sierra Pacific Industries\*\*
- Other Private (Blank)

\*\* Includes former properties of R.H. Emmerson & Son, LLC

\* PARCEL DATA SOURCES:  
Placer County, July 2006, El Dorado County, February 2007, USFS Region 5, February 2009.  
Some data has been modified to account for known errors and is to be used for general planning purposes only.

### PCWA Facilities and Features

- Dam
- Ancillary and Other Facilities
- Powerhouse
- Gage
- Penstock
- Tunnel
- Pipeline
- Gate
- Access Point
- Public Safety Fence
- FERC Boundary
- Water Supply Line (above ground)
- Water Supply Line (buried)

Project Power and Communication Lines:

- Communication
- Power
- Power (underground)
- Communication/Power
- Communication/Power (underground)

### Transportation

- Non-Project General Access Road
- Project Road
- Project Trail
- Recreation Access Road
- Recreation Water Supply Facility Access Road or Trail
- Other Road

### Project Recreation Facilities

- Picnic Area
- Boat Ramp
- Scenic Viewpoint
- Developed Campground
- Recreation Facility Footprints

### Other Facilities

PG & E Transmission Lines:

- 230 kV
- 60 kV

### Potential Betterments Features\*

- Construction Staging or Work Areas
- Temporary Road Associated with Potential Project Betterments
- Permanent Road Associated with Potential Project Betterments

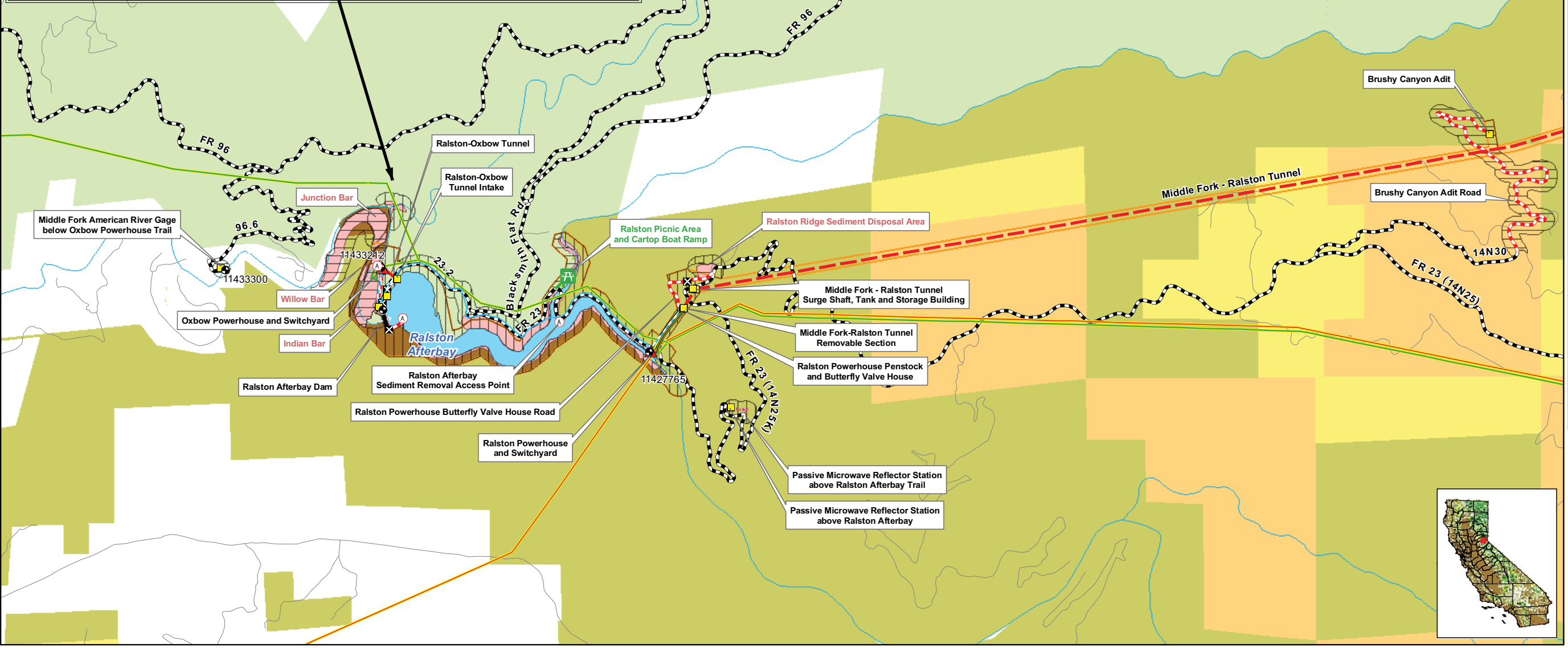
\* The proposed Project betterments are currently under review. The final configuration will be provided to the stakeholders and included in the Final Technical Study Plans

### Facilities and Dispersed Recreation Areas Identified by Stakeholders

- Recreation Access OHV Road
- Recreation Access Trail
- Trailhead
- Dispersed Concentrated Use Area
- Parking Area

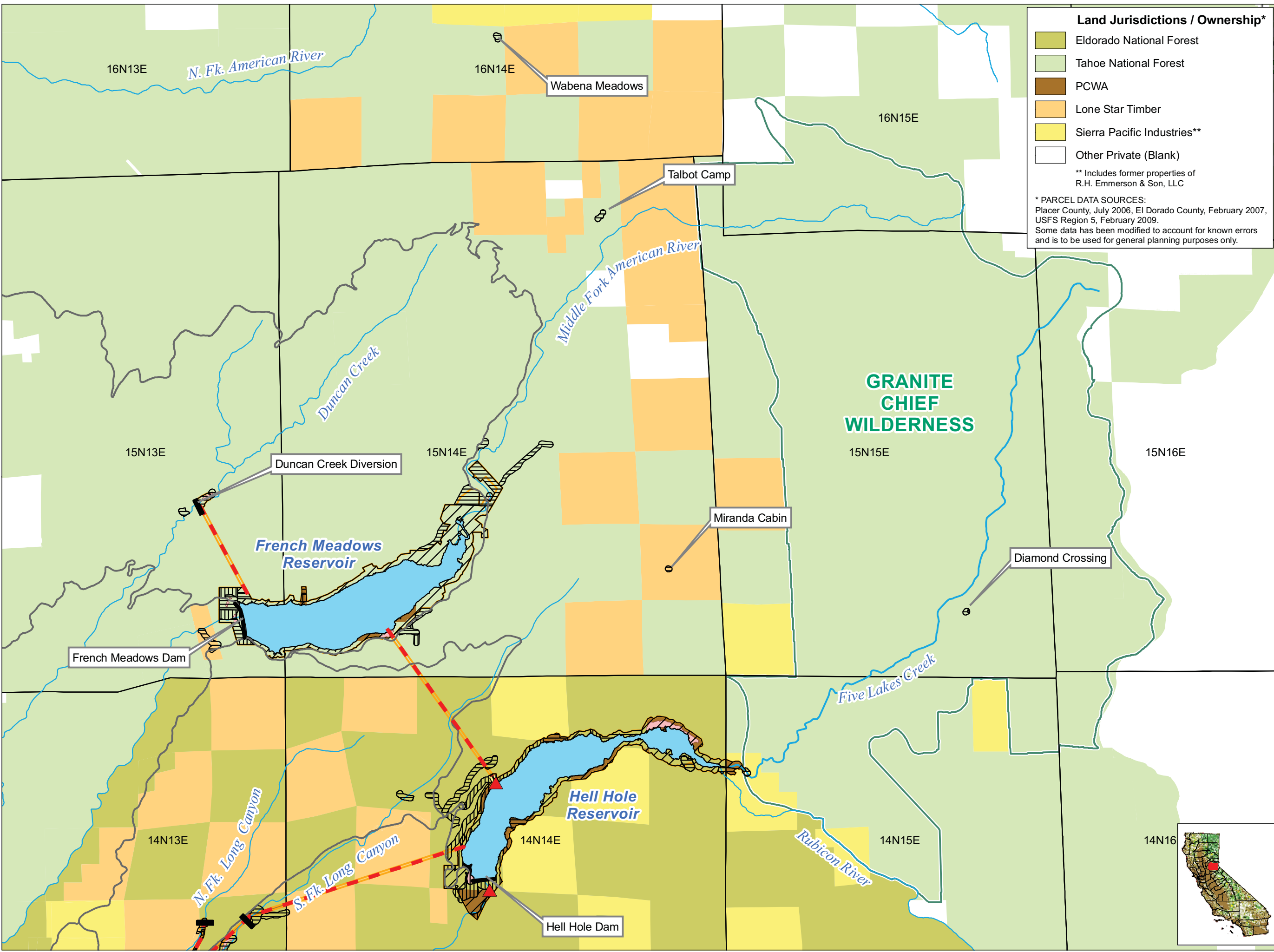
### Archaeological Survey Methods

- Visual Reconnaissance
- Pedestrian Survey - Complete
- Pedestrian Survey - General
- Inaccessible Area



Placer County Water Agency  
Middle Fork American River Project  
**Map CUL 1-3**  
Cultural Resources Survey Area  
Showing Survey Methods and Jurisdictions  
Sheet 5 of 6  
Ralston, Oxbow Area

0 0.25 0.5 Miles  
Projection: Ca. Stateplane, Zone 2  
Datum: NAD 83  
Date: 3/23/09



**Land Jurisdictions / Ownership\***

- Eldorado National Forest
- Tahoe National Forest
- PCWA
- Lone Star Timber
- Sierra Pacific Industries\*\*
- Other Private (Blank)

\*\* Includes former properties of R.H. Emmerson & Son, LLC

\* PARCEL DATA SOURCES:  
Placer County, July 2006, El Dorado County, February 2007, USFS Region 5, February 2009.  
Some data has been modified to account for known errors and is to be used for general planning purposes only.

**Project Facilities**

- Powerhouse
- Dam
- Tunnel
- Penstock
- FERC Boundary

**Transportation**

- Roads

**Hydrography**


- Watercourse
- Water Body

**Designated Boundary**

- Wilderness Area


**Archaeological Survey Methods**

- Visual Reconnaissance
- Pedestrian Survey - Complete
- Pedestrian Survey - General
- Inaccessible Area




Placer County Water Agency  
Middle Fork American River Project

**Map CUL 1-3**  
**Cultural Resources Survey Area**  
**Showing Survey Methods and Jurisdictions**  
Sheet 6 of 6  
Project Snow Courses



Date: 3/23/09



Projection: CA State Plane, Zone 2  
Datum: NAD 83

